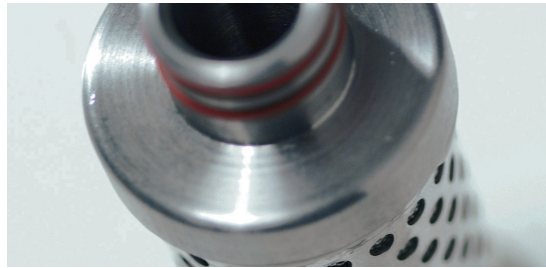
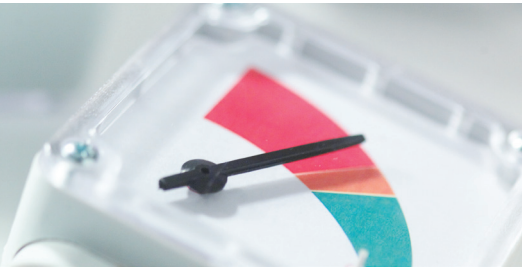


medical sterile filters



16 models specifically designed and manufactured to exceed the requirements for medical gas pipeline systems

The nano F¹ range of medical sterile filters are manufactured from cast aluminum alloy providing enhanced strength and feature an E-Coat™ finish for optimum corrosion protection.

This range encompasses 16 filters with connections from ¼" to 3" and rated flows from 15 to 1500 scfm. The modular design allows close coupling of filters to simplify installation and maintenance.

This unique design includes elements with stainless steel end caps for compatibility with autoclave sterilization. Each element is 100% integrity tested and provided with an Air Sterilization Certificate to guarantee the highest downstream air quality.

100% integrity tested elements

Tested and validated to international standards, elements are guaranteed for a minimum of 100 sterilization cycles at 248°F.



applications include:

dental

medical

veterinary

nano-purification solutions llc
charlotte, north carolina
united states

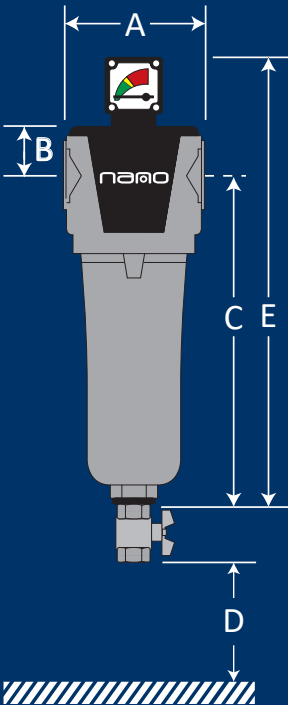
nano-purification solutions
st. catharines, ontario
canada

nano-purification solutions ltd
gateshead, tyne and wear
united kingdom

tel: 704.897.2182
fax: 704.897.2183
email: support@n-psi.com
web: www.n-psi.com

technical specification

filter model	inlet & outlet ⁽¹⁾		rated flow ⁽²⁾		dimensions (inches)					approx. weight	replacement element
	NPT	scfm	Nm ³ /h	A	B	C	D	E	lbs	part no.	
NMS 0015	¼"	15	25.5	1.93	0.73	5.27	3.00	6.00	0.7	E0015 MS	
NMS 0025	¼"	25	42.5	2.76	0.98	6.52	3.00	9.14	1.3	E0035 MS	
NMS 0035	⅜"	35	59.5	2.76	0.98	6.52	3.00	9.14	1.3	E0035 MS	
NMS 0050	½"	50	85	2.76	0.98	8.13	3.00	10.75	1.5	E0050 MS	
NMS 0070	½"	70	119	3.94	1.34	9.49	3.00	13.64	3.5	E0085 MS	
NMS 0085	¾"	85	144	3.94	1.34	9.49	3.00	13.64	3.5	E0085 MS	
NMS 0175	1"	175	297	3.94	1.34	14.21	3.00	18.36	4.4	E0175 MS	
NMS 0280	1 ¼"	280	476	4.80	1.65	16.42	3.00	20.88	6.2	E0325 MS	
NMS 0325	1 ½"	325	550	4.80	1.65	16.42	3.00	20.88	6.2	E0325 MS	
NMS 0400	1 ½"	400	680	5.75	2.05	16.89	3.00	21.75	9.2	E0450 MS	
NMS 0450	2"	450	765	5.75	2.05	16.89	3.00	21.75	9.2	E0450 MS	
NMS 0700	2"	700	1190	5.75	2.05	28.82	3.00	33.68	13.9	E0700 MS	
NMS 0850	2 ½"	850	1445	8.27	2.62	20.73	3.00	26.16	18.7	E1000 MS	
NMS 1000	3"	1000	1700	8.27	2.62	20.73	3.00	26.16	18.7	E1000 MS	
NMS 1250	3"	1250	2125	8.27	2.62	29.51	3.00	34.94	23.1	E1250 MS	
NMS 1500	3"	1500	2550	8.27	2.62	35.69	3.00	41.12	26.4	E1500 MS	



specifications	NMS 0015	NMS 0025 to 0050	NMS 0070 to 1500
design operating pressure range (psig)	0 to 232	0 to 232	0 to 232
condensate drain (included)	MDV 25	MDV 25	MDV 50
differential pressure indicator / gauge	-	NDP 50	NDP 1500
filter housing material	cast aluminum with E-Coat™ & powder top coat finish		

element performance	MS
DOP efficiency ⁽³⁾	>99.9999%
particle removal	0.01 micron
recommended operating temperature range	35°F to 212°F
design operating temperature range	35°F to 248°F
maximum autoclave temperature ⁽⁴⁾	273°F
pressure drop - clean	1.5 psid
pressure drop - recommended replacement	6.0 psid
end cap material	stainless steel
flow direction through element	outside to inside
maximum steam sterilization cycles	100
maximum element life	6 months or 1000 hours

pressure correction factors	60	70	85	100	115	145	175	205	232
operating pressure (psig)	60	70	85	100	115	145	175	205	232
correction factor	0.76	0.84	0.92	1.00	1.07	1.19	1.31	1.41	1.51

(1) inlet and outlet connections are NPT threaded to ANSI B2.1

(2) at 100 psig. For all other pressures, refer to the pressure correction factor table above

(3) as specified in HTM 02-01 medical gas pipeline systems

(4) applies to the element only